

Get to know a King County

Groundwater Scientist

We characterize natural and engineered effects on our physical landscape.



King County

Department of Natural Resources and Parks
Water and Land Resources Division

Groundwater scientists have expertise in hydrology and geology. We conduct fieldwork and analyze large datasets to measure and interpret natural conditions and landscape changes over time. Field work includes surveying natural and engineered stormwater conveyances (streams, lakes, wetlands, pipes, culverts), data collection, and identifying landscape features influencing these. We work with large datasets, including GIS aerial/satellite imagery, well water depth, and time-series data like streamflow. These watershed analyses inform regional natural resource policies and regulations.

A typical week for a Groundwater Scientist might include:

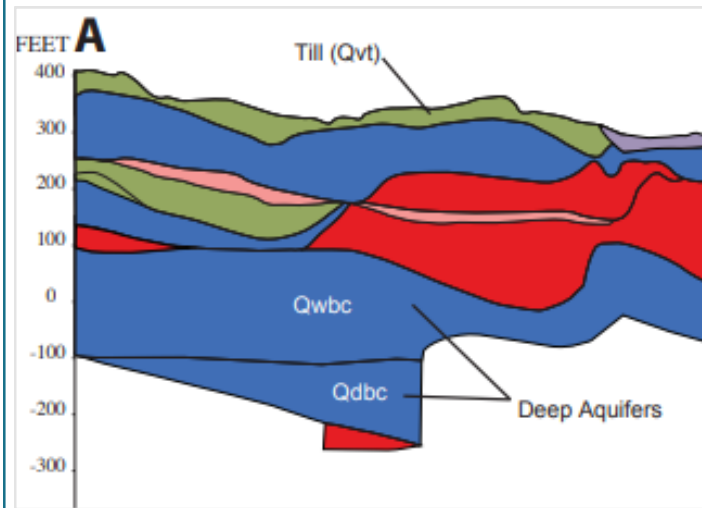
Fieldwork (1-2 days)

Collect groundwater and surface water data; manage data-collection instruments.



Data management & analysis (2 days)

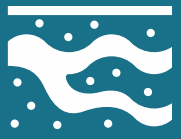
Update and use environmental data, often through statistical analysis, to produce visuals and figures.



Planning & collaboration (2 days)

Work with partners to plan, implement, and report on projects and inform policy decisions.





Becoming a King County

Groundwater Scientist



King County

Department of Natural Resources and Parks
Water and Land Resources Division

Areas of study

Groundwater scientists often have degrees in fields like:

- Earth Sciences
- Environmental Sciences
- Geology
- Hydrology

Certification to advance career:

- Hydrogeology license

Compensation

Early career King County groundwater scientists typically earn **\$42-55 per hour**.

Benefits for King County employees may include medical, dental, and vision, plus ways to save for the future through pension and savings plans.



Stand out on applications

Field skills and experience:

- Following Standard Operating Procedures (SOPs) to collect groundwater and surface water data.
- Experience working outdoors in all weather

Office skills, experience, and tools:

- Aptitude in math, physics, chemistry, and statistics
- Management of datasets, data analysis, and data visualization using tools like:
 - ArcGIS
 - Python
 - R-Studio
 - SQL
 - Excel
 - MS Access
 - GitHub

Learn more about our work:
kingcounty.gov/EnvironmentalScience

Search these terms to see similar jobs: geologist, water quality, groundwater hydrologist, earth scientist, watershed hydrology technician, physical scientist

Questions? Email us!
science@kingcounty.gov